

PERIMETER

SURVEYING & MAPPING
 Certificate of Authorization No. LB7264
 Prepared by: Jeff S. Hodapp, P.S.M.
 951 Broken Sound Parkway, Suite 320
 Boca Raton, Florida 33487
 Tel: (561) 241-9988
 Fax: (561) 241-5182

LEGEND:

- ⊙ SET P.R.M. (UNLESS OTHERWISE NOTED)-4" X4" CONC. MON. WITH ALUMINUM DISK STAMPED P.R.M.-LB7264
- P.C.P.
- ⊖ CENTERLINE

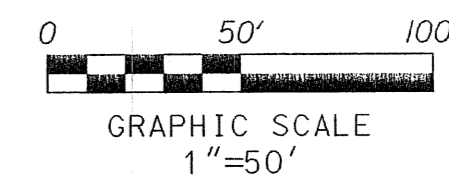
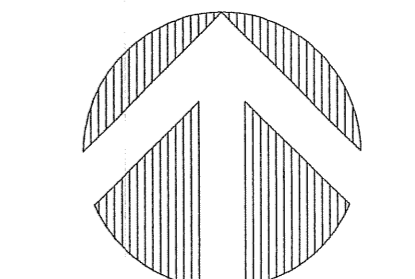
ABBREVIATIONS:

- CH CHORD
- CHB CHORD BEARING
- CONC. CONCRETE
- COR. CORNER
- Δ DELTA (CENTRAL ANGLE)
- D.E. DRAINAGE EASEMENT
- H.O.A. HOMEOWNERS' ASSOCIATION
- AR LENGTH
- L.B. LICENSED BUSINESS
- L.E. LANDSCAPE EASEMENT
- L.M.E. LAKE MAINTENANCE EASEMENT
- L.M.A.E. LAKE MAINTENANCE ACCESS EASEMENT
- L.S. LICENSED SURVEYOR
- L.W.D.D. LAKE WORTH DRAINAGE DISTRICT
- MON. MONUMENT
- O.R.B. OFFICIAL RECORDS BOOK
- N.R. NON-RADIAL
- P.B. PLAT BOOK
- P.B.C.R. PALM BEACH COUNTY RECORDS
- P.G. PAGE
- P.C.P. PERMANENT CONTROL POINT
- P.O.B. POINT OF BEGINNING
- P.O.C. POINT OF COMMENCEMENT
- P.R.M. PERMANENT REFERENCE MONUMENT
- P.S.M. PROFESSIONAL SURVEYOR & MAPPER
- P.U.D. PLANNED UNIT DEVELOPMENT
- R. RADIUS
- R.E.E. ROOF ENCROACHMENT EASEMENT
- R/W. RIGHT-OF-WAY
- SEC. SECTION
- S.F. SQUARE FEET
- U.E. UTILITY EASEMENT

TIVOLI ISLES P.U.D.

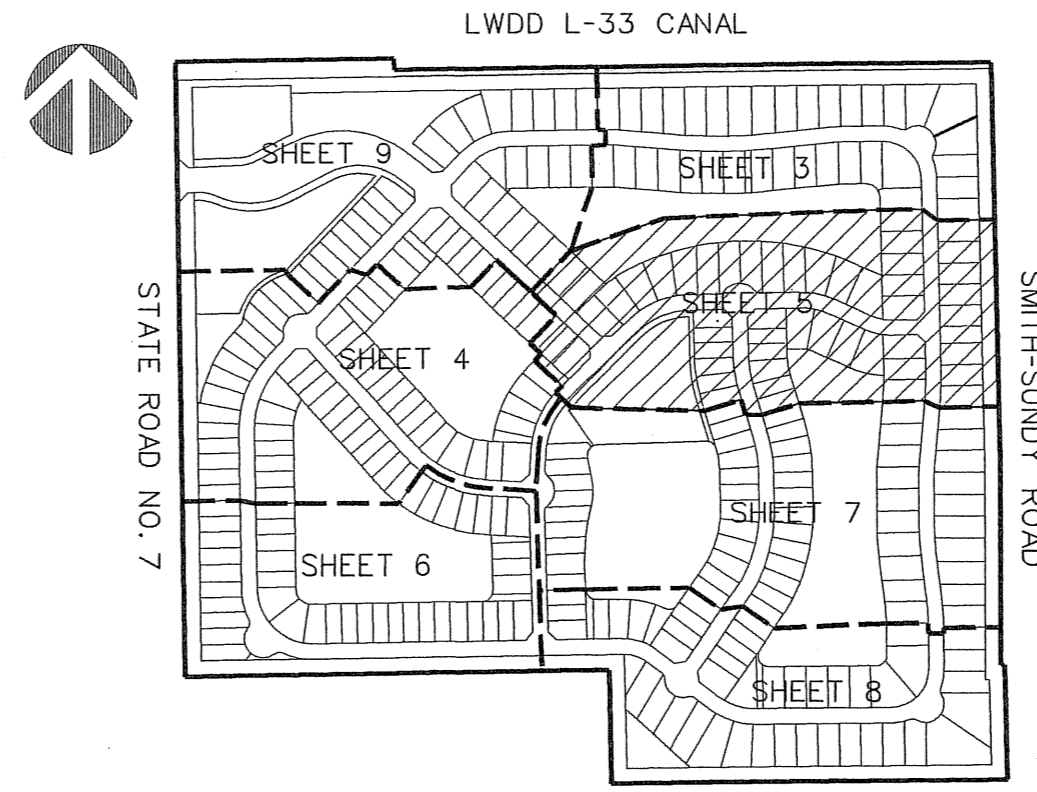
441 - ATLANTIC P.U.D. (CONTROL NO. 04-206)

A REPLAT OF ALL OF TRACTS 79-87, 106-112, AND A PORTION OF TRACTS 73-78, 88, 105, AND 117-120, TOGETHER WITH A PORTION OF THE PLATTED ACREAGE WEST OF SAID TRACTS 80, 81 AND 112, ALL IN SECTION 18, TOWNSHIP 46 SOUTH, RANGE 42 EAST, OF "PALM BEACH FARMS COMPANY PLAT NO. 1" (P.B. 2, PGS. 26-28, P.B.C.R.), PALM BEACH COUNTY, FLORIDA. DECEMBER, 2005



96

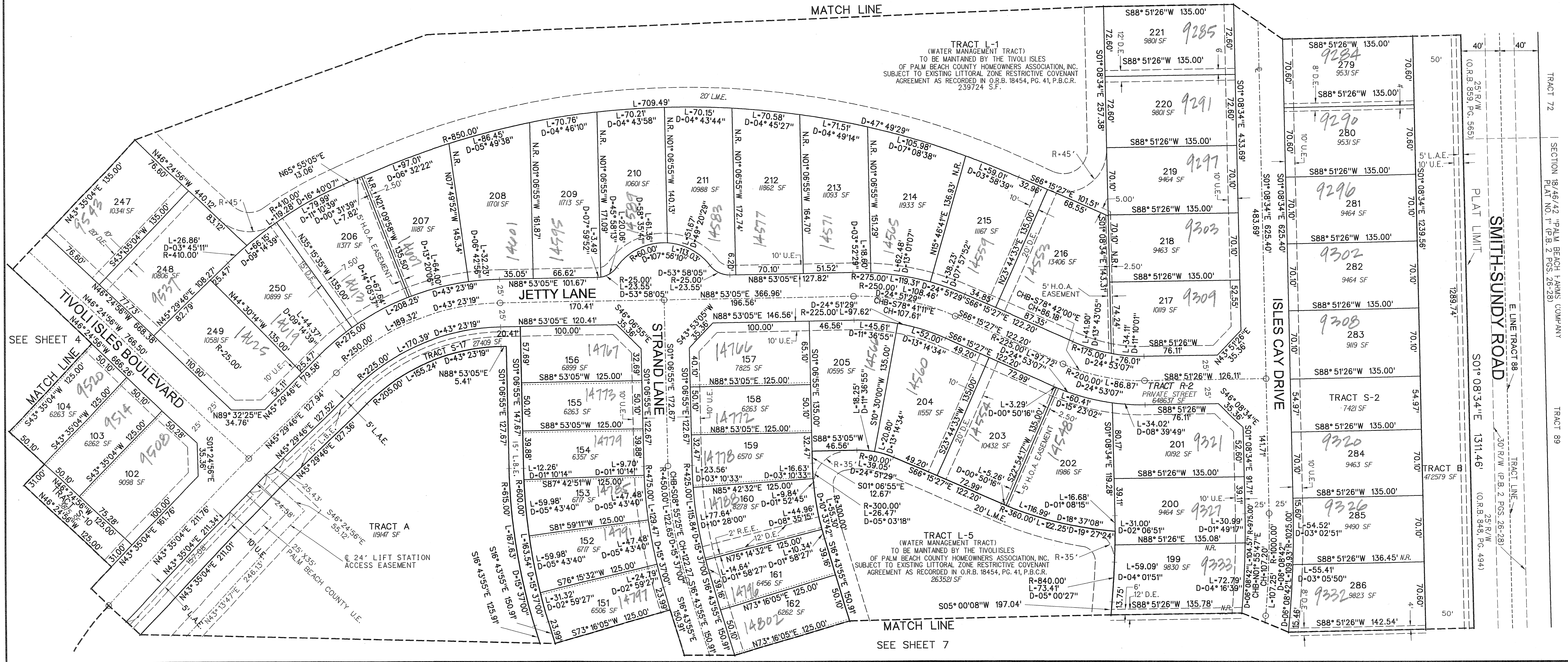
SHEET 5 OF 9



KEY MAP NOT TO SCALE

SEE SHEET 3

MATCH LINE



MATCH LINE

SEE SHEET 7

SUBDIVISION TIVOLI ISLES
 BLOCK 107
 FLOOD HAZARD ZONE A
 QUAD # 51
 TRAZ. 75B
 PUD NAME

TRACT 72 SECTION 18/46/42 PALM BEACH FARMS COMPANY PLAT NO. 1 (P.B. 2 PGS. 26-28)

TRACT 89 SECTION 18/46/42 PALM BEACH FARMS COMPANY PLAT NO. 1 (P.B. 2 PGS. 26-28)

SMITH-SUNDY ROAD
 PLAT LIMIT
 E LINE TRACT 88
 30' R/W (P.B. 2 PGS. 26-28)
 25' R/W (O.R.B. 848, PG. 494)

ISLES CAY DRIVE
 50' U.E.
 5' L.A.E.
 5' U.E.